

CONNECTED SOUTHAMPTON

Transport Strategy 2040

Green Transport Recovery Plan



Contents

Southampton Green Transport Recovery Plan.....	3
1 Background.....	3
2 Southampton Green Transport Recover Plan (GTRP).....	4
3 Southampton Green Transport Recovery Plan - Overview	6
4 Green Transport Recovery Plan - Approach.....	8
Supporting Social Distancing	9
Supporting Active Travel.....	10
Monitoring and Evaluation.....	12
5 Southampton Green Transport Plan – Activities	13
6 Identified Schemes.....	15
7 Implementation Process	17
Traffic Regulation Orders	17
Communications	18
8 Supporting Programmes.....	18
Behavioural Change	19
Transforming Cities Fund.....	19
Electric Vehicle Action Plan	19
Solent Recovery Communications Campaign	20
9 Funding	20
10 Governance & Resources.....	21
10 Roles & Responsibilities	22
11 Programme.....	23
Appendix 1 - Assessment of Infrastructure Options for Corridors and Destinations	24
Appendix 2 - Visual examples of highway measures	36
Supporting Social Distancing	36
Supporting Active Travel.....	40



FINAL DRAFT

The unprecedented Covid-19 lockdown is giving Southampton the opportunity to reevaluate and reprioritise public space and how people get around. Car travel is down and walking and cycling is up. This has seen more families being active - getting on to a bike for the first time, air pollution is much improved, and the streets are quieter. This gives us a unique opportunity to put in place a series of measures that will make the best of this 'new normal'. As the city begins to reopen, we are taking this moment to implement a range of innovative and quick measures that support social distancing and keep people active by cycling and walking; to support their well-being, improve our environment and economy in the long-term.

Cllr Steve Leggett, Cabinet Member Green City & Place

Southampton Green Transport Recovery Plan

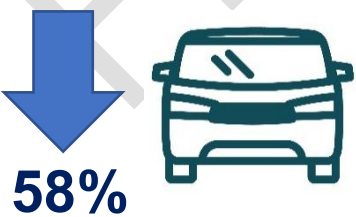
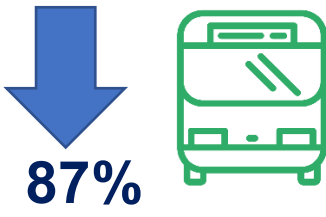
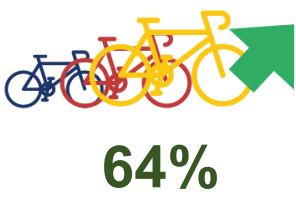
1 Background

Since being imposed on 23rd March 2020, the UK Covid-19 lockdown has had a significant impact on travel and transport use in Southampton. The advice to stay at home and only travel when essential has seen average traffic levels decrease across the city, with levels down 60% on the week before lockdown started¹.

The number of passengers being transported by bus has also dropped significantly with 87% fewer people travelling by bus in April compared to February, and rail use has dropped by 90% (nationally). There have been instances of increases in road traffic speeds, with 37% of traffic on A33 Millbrook Road West travelling above the 40mph speed limit.

With cycling and walking among the permitted daily exercises during the full lockdown cycling levels have increased significantly. Compared to before the lockdown there has been a 64% increase in cycling trips. This has been most marked on routes that are for leisure, such as Weston Shore, Riverside Park, or Redbridge Road going to the New Forest. Routes that would normally see commuter cycling have seen modest levels of use reflecting the destinations they serve – the City Centre, Industrial Estates or the universities that are closed.

As the UK is now beginning to incrementally ease lockdown measures traffic levels are starting to change. Traffic levels have increased by 13% and are 38% higher than the second week of the lockdown². However, levels of cycling are still strong and 16% above where they were in 2019 on comparable routes.

Southampton Traffic in May 2020 ³		
 <p>58%</p>	 <p>87%</p>	 <p>64%</p>
Traffic levels down since start of lockdown	Bus usage down in April compared to February	Cycling has increased since start of lockdown

These changes in traffic have created a new dynamic to Southampton where people have taken up walking and cycling as ways of travelling for work and leisure. This has created low

¹ From week before lockdown w/e 20th March 2020, to week ending 9th May 2020

² Data from week commencing 11th May 2020

³ Data correct to week ending 9th May 2020

traffic neighbourhoods, seen a marked improvement in air quality, and benefitted people's health and well-being. This provides a unique moment to reshape the city to support the economic recovery, be more resilient, and how people travel so getting back into the car is not the default option for many. Creating attractive places for people where they can safely walk and cycle to work, school and leisure, feel confident to use public transport, and improve health and well-being will be vital to achieving this.

2 Southampton Green Transport Recover Plan (GTRP)

To do this Southampton City Council (SCC) has prepared the Southampton Green Transport Recovery Plan (GTRP). It sets out our approach for how we are going to support the economy, health & well-being, and environment for people living, working and visiting Southampton.

The GTRP covers three phases, commencing with the emergence from lockdown, then focuses how transport can support the reopening and recovery of the city.



As the lockdown is progressively and incrementally eased, this process of moving through from emerging to re-opening to recovery presents opportunities and threats to how people are and will travel.

Opportunities	Threats
<p>Supporting Active Travel - With the increased interest in cycling and walking need to support people who have taken up these activities, and how they can be persuaded to continue travelling actively, whether for work, school or leisure, and support healthy lifestyles.</p>	<p>Increasing car use - If car use increases to levels above pre-Covid, as people avoid public transport, this could lead to increases in congestion, impact on people's health and on air pollution. It will also hamper people who will want to keep travelling actively.</p>

<p>Managing Demand – Influencing the timing of and method people get to work and school, enabling social distancing for bus users and active travel modes, and supporting continuation of regular home working for those able to.</p>	<p>City & District Centres - The City will change as a result of the economic and social changes experienced through the lockdown. The local retail areas, District Centres and the City Centre will all change. There is a need to reshaping the City Centre and District Centres so people can social distance when moving about, when entering/exiting shops and get to them by walking or cycling. Any social distancing would need to be designed so it doesn't detract from the public realm. Consideration needed about accessibility and servicing.</p>
<p>Making Public Transport Safer – While the Government's message is to avoid public transport where possible, there will be people who will still need to travel by bus, train or ferry. They will need to be reassured that they can use public transport whilst minimising the risks and that it is reliable, clean and as safe as possible.</p>	<p>Avoiding Public Transport - Potential for a 20% decrease in public transport patronage impacting on viability of bus services and providing accessibility for those who require buses, also managing social distancing on the public transport network, such as at bus stops.</p>
<p>Messaging - making the public aware of the new ways to travel and how to adopt new travel behaviours. The My Journey programme is an ideal platform for carrying out a campaign around social distancing and taking up active travel in the new normal.</p>	<p>Messaging – The positive messaging about active travel and impacts on wider health outcomes might be lost with 'anti-car backlash', and the impact of long-term exposure to harmful emissions.</p>
<p>Future Travel – Government advice is that public transport should be avoided as it difficult to maintain social distancing can be maintained. This may result in increases in car-based traffic, and this increase in car-based traffic could also impact on the beneficial increases in cycling. Providing alternatives that people can use instead of their car will be beneficial. Using new models and modes, such as more electric vehicle charging points, e-bikes, e-scooters or micro-freight consolidation through the Solent Future Transport Zone (FTZ).</p>	<p>Managing Demand – If not managed with staggered times or alternative modes everyone may travel at the same time and in cars causing congestion and pollution. To avoid this need to encourage new behaviours and adapt to the 'new normal'. Locking in the behaviour changes around home working and sending out messaging about not choosing the car first.</p>
<p>Enabling Social Distancing – Improving the walkability and accessibility Southampton by deploying solutions that enable social distancing in areas where people would normally gather or cluster - such as on pavements by school gates, accessing retail units, and on and accessing public transport – at bus stops or rail stations.</p>	<p>Managing Expectations - Responding to short-term requests for temporary changes to the road network to support active travel. We will do this by being strategic and proportionate when responding to requests made by residents and active travel groups to Members.</p>

Supporting Health & Well-Being – the lockdown has had an impact on people’s lives and well-being. Reductions in social interaction have had impact on well-being – particularly loneliness. People will also be wary of using public transport. Cycling and walking will help with physical and mental health by being outside in safe places and able to engage with people. Creating more safe space for walking helps with social distancing anxiety.

3 Southampton Green Transport Recovery Plan - Overview

The long-term transport strategy for the city, Connected Southampton 2040, sets out a vision where there is greater space for travelling by active modes and public transport whilst managing vehicles.



The Connected Southampton strategy reinforces some of the outcomes seen during the Lockdown. It provides a framework that can be accelerated in response to the significant change in people’s travel behaviours, mitigate some of the long-term negatives around obesity, health inequalities, and air pollution, and transform the layout of the city.

The GTRP also supports the Green City Charter, Cycling Strategy, Health & Well-Being Strategy, and Council Strategy 2020-2025 in helping to create a Greener, Healthier and Fairer city.



The GTRP is the response to the opportunities from the changes in people's behaviours and travel patterns. It will take the Connected Southampton framework and apply this to the meeting transport opportunities and tackling the threats presented by the lockdown.

The GTRP approach will be based on supporting social distancing on transport and in public spaces, promoting active travel as the new normal, and managing the network so that as more people return to work, school and leisure, car-based travel and congestion does not exceed pre pandemic levels. This aim is that this will enable more space for people to get around safely and securely with confidence, supporting public transport in the longer-term, and allow people to continue travelling actively. The GTRP will be supported by an ongoing messaging programme that encourages people to adapt to the new normal for transport.

Benefits from the GTRP

- Supporting the economic recovery of Southampton with active travel at the front so as more people return to work and school, car-based travel and congestion and pollution doesn't return to pre pandemic levels;
- Supporting pupils and staff to get to school safely by walking, scootering and cycling;
- Supporting social distancing and activity to overcome people's anxiety and enhance their overall well-being;
- Continuing to lower air pollution and carbon emissions;
- Support people's active and healthy lifestyles; and
- Provide opportunities to think creatively about the public spaces we have available - managing queueing, managing space so it can be used for other means such as dining space, public art, activate new spaces, and working with community groups to re-design their local areas.

Over the coming weeks and months SCC will implement a programme of experimental measures in the City Centre, District Centres, on corridors linking into Hampshire, and in residential areas.

4 Green Transport Recovery Plan - Approach

The GTRP is closely aligned to three phases for lockdown over the near, medium and long-term period.

- **lockdown** – supporting essential workers and active travel in the near-term period,
- **re-opening** - managing and influencing travel demand by active travel, public transport and private car during the following weeks as lockdown measures are eased, and
- **recovery** – continuing to manage and influence travel over the longer-term in Southampton to support businesses and services.

This is so SCC can help support and grow green, sustainable and active travel and the necessary social distancing measures that will need to be in place. Allowing key workers getting to work, supporting schools in getting pupils safely to and from school, creating a cleaner city, and supporting the economic recovery and long-term resilience.

It covers all the stages of a journey – the start from home, along the travel corridors, and at the destination. From the start where additional cycle parking or changes to parking layouts could be made in residential areas, to and along the corridors providing safe routes, and at destinations like the City Centre where more cycle parking or creation of additional space for social distancing could be implemented.

The GTRP is being applied spatially across Southampton, from the City Centre; along the corridors linking to the City Centre; major employment hubs including University Hospital Southampton, the Port and University; schools; and Local and District Centres. These are all areas where people will want to travel for work, education or retail if necessary.

The spatial areas are:

Key commuting corridors	Main corridors for cycling and public transport – provide priority space for people cycling with dedicated cycle lanes, retiming pedestrian crossings, and bus priority. Seek to bring forward any Transforming Cities Fund schemes.
City Centre	Given the mix of activities, focus and space the City Centre needs an interlinked plan, working with Go! Southampton (the BID) that covers items such as social distancing at shops, managing space so people can get around safely, interchange between modes, providing incentives and opportunities for people to cycle, opportunities for street scape and public art improvements, and promoting a message around active travel. Seek to bring forward any Transforming Cities Fund or Future High Streets Fund schemes.
District Centres	Individual approaches to the different District Centres - active travel routes to the District Centres, working with businesses and groups to support them on managing space and access to shops so people can get around safely, opportunities for street scape and public art, cycle parking, bus stop layouts, and promoting the message around active travel.
Employment Hubs	Working with businesses on promoting active travel, staggered timings, home working, engagement on support training, incentives, and improving cycle and walking access to sites such as Southampton General, the Port, and the Universities.

Schools	Working with schools and their specific reopening plans to encourage pupils and staff to walk, cycle and scoot to school, creating additional space outside schools for queuing at drop off-pick up times, manage the public transport demands of pupils, and better manage space with road closures for School Streets.
Residential Areas	Working with communities to re-design their local area using features such as modal filters, making it more permeable for cycling and walking – removing banned turns, contraflow cycling, continuous footways, local streetscape improvements (temporary planting, benches etc), facilities for cycle parking

Across all the spatial areas there are two themes – **Supporting Social Distancing** and **Supporting Active Travel**.



Supporting Social Distancing

This is centred around providing more space so people are able to adhere to social distancing guidelines. As more people go to work, shops and out for leisure managing the demand will be vital. This covers how retail and businesses get people safely in and out of



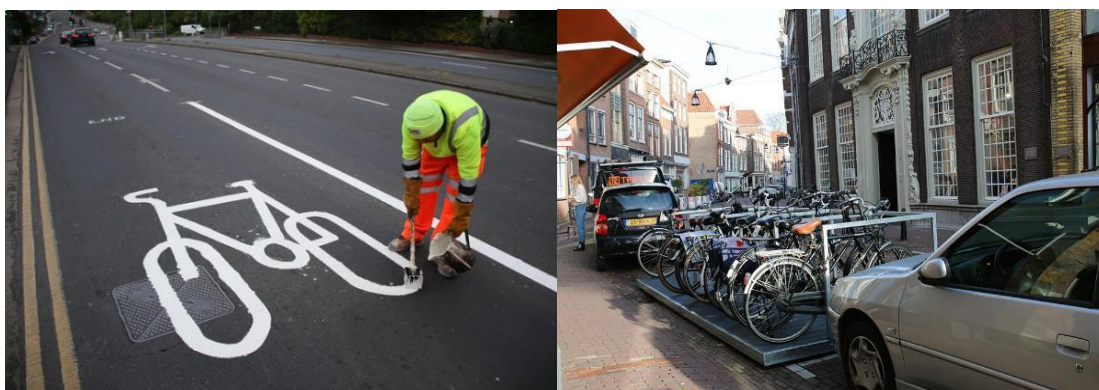
Using temporary flooring and planters to create more walking space by suspending parking in busy retail areas. Temporary stencil markings on the ground to highlight the social distancing message.

their premises, how and when people get to work, and working with the bus operators on how to manage access and risks on public transport.

Supporting Active Travel

This focusses on enabling people to continue with the active travel activities that they have been doing. This will range from creating facilities and more space for people cycling and walking whether that is to work, the shops or for leisure. A series of 'hard' physical measures that range from small scale adaptations to larger scale and quickly deliverable schemes that can have a greater potential impact will be rolled out. Alongside this will be a series of 'soft' behaviour change measures (additional training, advice, communications and marketing) that will reinforce the message and support people's new travel behaviours.

The Southampton Cycle Network will be rapidly advanced in line with the plans in our Transforming Cities Fund programme. This will utilise a range of existing measures and tools that can be implemented quickly, including 'pop-up' cycle lanes, temporary road closures to traffic, bus lanes, modal filters, and reallocating road space to create more space for cycling in narrow spaces. These will be on the key corridors into Southampton, on routes to Southampton General Hospital, and along routes where people cycle for leisure. At the start and end of people's journeys we are proposing additional secure and temporary cycle parking. Modal filters, such as temporary planters, will help discourage through traffic from using residential streets whilst providing attractive and improved access to people walking and cycling in neighbourhood areas



Temporary measures to support cycling – cycle lanes repurposing a traffic lane and cycle parking.

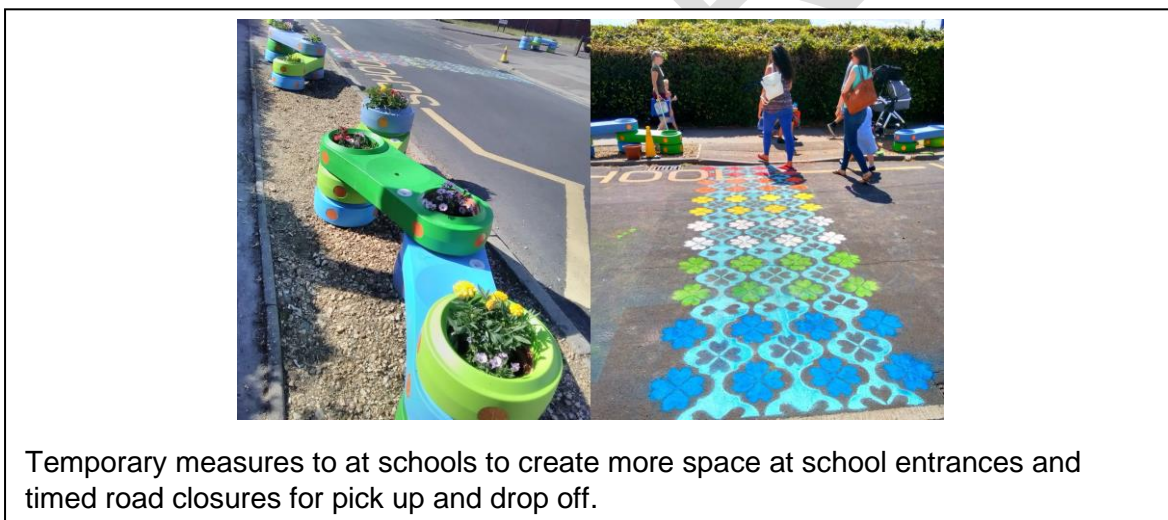
The walking environment will be enhanced through the reallocation of road space to support the economic recovery whilst enabling social distancing to take place. The delivery of additional and inclusive footway space will be particularly vital within the City and District Centres to provide people with enough space to move around easily whilst complying with social distancing rules. Social distancing will continue to be encouraged in busy retail areas through new signing and temporary markings.

We will enhance key corridors that connect people to these economic hubs and other transport services by reducing pedestrian waiting times at key crossing points and removing or relocating existing street furniture to more appropriate locations. This will also include providing new parklets that will offer residents and businesses more flexible and attractive spaces to queue, provide opportunities for public art, for people to move around or as seating areas outside cafes and restaurants.

Improved walking routes will also link people to leisure routes, such as Weston Shore, open spaces and the Public Rights of Way Network, to encourage people to continue to undertake exercise.



We will be working with schools to enable pupils and staff to get to school actively and supporting social distancing. We already have a successful School Streets programme and toolkit, and we will work with schools to facilitate local road closures or other measures that can create extra space at the school gates. These combine timed road closures with parking reallocation or additional temporary footway widening.



The DfT have also indicated that e-scooters trials can form part of any plans, including Park & Ride options from an edge of town site to an employment hub. Southampton is part of the Solent Transport Future Transport Zone (FTZ) and was invited to be a trial centre for e-scooters, and the roll out of this and evaluation will be led by Solent Transport

Also looking to the future of transport, we will look at trialling new forms of transport such as e-scooters, and Mobility as a Service (MaaS). This is closely linked to the Solent Future Transport Zone.

Alongside these social distancing and active travel, public transport will still have an important role to play for getting around. While the current advice is to avoid using public transport, some people, such as people living in households without a car, will still need to travel by bus and rail. Public transport operators will need to manage their space on-board vehicles and at interchanges. This includes screens for bus drivers, contactless payments and managing where people on-board vehicles can sit to ensure 2m or more social distancing and minimising proximity with others when alighting/boarding. As time progresses public transport will still have a vital role to play in transporting people, and if congestion increases the reliability of the bus will decrease. Putting in priority measures, such as bus lanes or technology now future-proofs the bus which is central to our long-term transport plan. Bus lanes can also be used by people cycling and taxis.



Temporary measures to support public transport –repurposing a traffic lane for additional bus stop queuing and cycle routes.

Monitoring and Evaluation

The GTRP will be reviewed and monitored to ensure that it is meeting the objectives and is enabling people to get around. This will be initially be daily, weekly, then as behaviours and time progresses moved to monthly. The monitoring regime includes checking that the temporary measures are safe and secure. Evaluation will look at levels of use for cycling, walking and public transport as well as impact on general traffic. This will use the existing network of traffic counters, real time information, and Bluetooth journey time systems, and implementation of temporary counters.

5 Southampton Green Transport Plan – Activities

Step 1 - Near Term (next weeks)	
Activities - Stay at home for many, key workers and those unable to work at home moving, footfall and traffic increases, social distancing, low use of public transport, focus on City Centre, District Centres & employment hubs	
<p style="text-align: center;">Supporting Social Distancing</p> <p>The Message: Cycling and walking are healthy ways of getting around, identify the safe routes, and that the Council has a programme of works and activities that are there (#keepactive), using the EVMS to reiterate messages about social distancing and active travel</p> <p>Managing the School Run Engaging with schools to identify schools that would want to carry out temporary barriers/road closures could be done to create safe routes and space for social distancing</p> <p>Creating More Space <u>City Centre & District Centre Retail Areas</u> Working with the BID and business groups in the District Centres, on how to layout the highway – including if permits are required – for queuing outside stores when they re-open – marking out lines, stencilling, opportunities for temporary street art. <u>Tactical/Temporary Street Closures</u> Using temporary barriers to create more space for social distancing, and if required by Police closing certain roads or car parks to provide additional space for walking and cycling. Closure of some car parks to discourage gatherings – Weston Shore.</p> <p>Demand Management <u>Working with Businesses</u> To understand their plans post-Covid and how home working, cycling, staggered work times to reduce pressure on public transport, deliveries and flexible loading times. <u>Managing Access to Public Transport</u> Working with the operators on how we can support them with access that reduces risk – additional tap on tap off readers, messaging. Understanding their plans as people may be reluctant to use public transport. Establish a new Public Transport Recovery Task Force to help foster and ensure close collaboration over the coming months.</p>	<p style="text-align: center;">Supporting Active Travel</p> <p>The Message: Through My Journey promoting what there is for walking and cycling (#keepactive), highlighting the positive active travel stories from lockdown, and engagement with businesses as they prepare to reopen.</p> <p>Supporting Walking & Cycling <u>Cycle Parking Parklets</u> Identify programme of residential road ‘parklets’ that could include cycle hangers on-street, pinch points for walking etc <u>Keeping Key Workers Moving</u> Targeted cycle and walking routes improvements to support key workers – such as routes to the Hospital and information to them. <u>Trip End</u> Identify car parking (on-street and in car parks) that can be repurposed to provide free secure cycle parking in City Centre and District Centres, install first one. Identify places where there are pinch points in the City Centre that could be locations for parklets for temporary cycle parking, EV, or providing more walking space. <u>Identify Opportunities</u> Working across the Council and with partners to identified opportunities for infrastructure that supports active travel and better neighbourhoods, building on the TCF & ATZ programme. <u>Priority at Crossings</u> Identify locations where pedestrian crossing priorities can be altered to on-call rather than delayed, or use additional detection to reduced need to push buttons. <u>Walkability</u> Review of walking routes and spaces around District Centres – creating more space, decluttering, space for rest etc.</p> <p>Future Travel <u>Electric Vehicle Charge Points</u> Review of potential sites for residential EV charging points <u>E-Scooters</u> Scope trials for e-scooters in local areas</p>

Step 2 - Restart - Medium Term (weeks/months)

Activities - Vulnerable stay at home, trip levels returning, education trips resume, traffic higher, social distancing required, public transport low, focus on City Centre, schools and transport hubs

Supporting Social Distancing

The Message

Cycling and walking are healthy ways of getting around, identify the safe routes (#keepactive), and that the Council has a programme of works and activities that are there, using the EVMS to reiterate messages about social distancing and active travel – new normal campaigns.

Managing the School Run

Implementing local street closures to create extra space at the school gate to enable social distancing and safer routes for cycling, walking and scooting to school reflecting staggered or smaller class sizes.

Creating More Space

Retail Social Distancing – City & District Centres

Continue to work with BID on social distancing measures in Above Bar Street, and in other District Centres taking learnings from the City Centre approach. Opportunities for public art.

Bus Stops

Space and layout at bus stops in the City Centre to help social distancing, use of the rear doors (where available) for boarding, cleaning regime of the shelters.

Demand Management

Working with Businesses

To understand their plans post-Covid and how home working, cycling, staggered work times to reduce pressure on public transport, deliveries and flexible loading times

Managing Access to Public Transport

Public Transport

Working with the operators on how we can support them with access that reduces risk – additional tap on tap off readers & messaging.

Supporting Active Travel

The Message

Through My Journey promoting what there is for walking and cycling (#keepactive), highlighting the positive active travel stories from lockdown, and engagement with businesses as they prepare to reopen.

Supporting Cycling & Walking

Cycle Parking Parklets

Commence residential parklet and cycle hanger programme on-street.

Keeping People Moving Actively

Targeted cycle routes improvements to support key workers – such as routes to the Hospital and information to them.

Identify and start to roll out pop-up cycle and walking lanes using temporary barriers on cycle routes to create additional safe space for social distancing walking and cycling

Trip End

Repurposing car parking (on-street and in car parks) to provide free secure cycle parking in City Centre and District Centres, using SolentGo or SmartCities cards for access.

Implement the identified City Centre parklet programme.

Making cycles available & training

Making some of the stored YoBikes available to key workers who might not have access to a car and unable/unwilling to use public transport. Online training activities to help people cycle.

Walkability

Carry out first two District Centre walkability schemes to improve space

Priority at Crossings

Carry out identified push button priority changes to on-call rather than delay Call pedestrians & cycles on every cycle.

Future Travel

Local Mobility Hubs

Setting up local delivery services from a hub to vulnerable/shielded people using SCC services, EV charging points, and e-scooters trial.

Step 3- Recovery (next 6-12 months)

Activities - Trip levels near 'normal', some social distancing, focus on maintaining status quo, focus on neighbourhoods and local economy

Supporting Social Distancing

The Message

Cycling and walking are healthy ways of getting around (#keepactive and new normal campaigns) and that the Council has a programme of works and activities that are there being delivered.

Managing the School Run

Growing the school streets programme with street closures at beginning and end of day as pupil numbers increase. Including secondary schools and the Universities.

Demand Management

City Centre & District Centre Retail

Decluttering and repurposing space so that people can access retail and support local shops, flexible delivery/loading that doesn't block the highway.

Working with Businesses

Continuing to work with businesses to ensure that practices become the new normal

Managing Access to Public Transport

Public Transport

Continuing to work with the bus operators on social distancing measures – contactless, tap on tap off etc.

MaaS Trials

Working on Solent FTZ MaaS programme to merge SolentGo and operators m-ticketing.

Supporting Sustainable & Active Travel

The Message

Continuing the positive messaging and, if deliverable, events that help people to continue cycling. Continued working with businesses to promote and keep workers cycling including #keepactive campaigns and 'newnorm' campaigns planned for summer/autumn to supplement the measures in this plan.

Supporting Cycling & Walking

Active Travel Zones

Delivery of ATZ measures including modal filters and road space reallocation, cycle hanger programme, better pedestrian crossing points,

Cycling Parking

Cycle parking in MSCPs and on-street made permanent and linked to SolentGo or Smartcities cards for access Southampton Cycle Network

Delivery of the innovative cycle routes on Bassett Avenue-The Avenue, Portswood Road, Porstmouth Road and Northam Road as part of the SCN – completes three corridors, plus if additional funding SCN2.

Repurposing Streets

Review of Pop Up Cycle and Walking Lanes and look to make any successful ones permanent, start to repurpose City Centre routes in TCF - New Road, Above Bar Street, Portland Terrace closed to through traffic with temporary measures in advance of permanent.

Permanent Closures

Review and making any identified temporary closures permanent.

Public Transport

Strategic bus lanes and bus signal priority to support journey times as traffic levels could make them unreliable.

Future Travel

Electric Vehicle Charging

Roll out of EV charging points in residential areas.

6 Identified Schemes

From a prioritisation of identification of existing schemes, schemes that meet the overall aim of the GTRP, schemes within other programmes such as TCF the first phase of schemes

have been identified. The prioritisation framework is in Appendix 1 and this provides an assessment of the individual infrastructure schemes for Supporting Active Travel and Supporting Social Distancing.

From the assessment the following infrastructure projects have been identified for both themes as priority are in the table below. The list is not exhaustive and will be kept under review so further schemes can be added to future phases.

Project	Timeframe	Client Lead	Delivery	Cost	Budget
Supporting Social Distancing					
Pedestrian crossing timings	May	T Policy	BBLP	£10,000	LTP
Bus Stop Social Distancing	May-July	T Delivery	BBLP	£50,000	LTP/ TCF
Retail Social Distancing – City Centre & District Centres	May-June	BID, Businesses	BID	£15,000	LTP/ BID
Parklets	June-July rolling	T Delivery	BBLP	£60,000	TCF/ FTZ
Managing the School Run	June- September	Sustainable City	BBLP/ SCC	£450,000	AF/LTP
Tap On Tap Off Buses & Priority	June-July	T Policy	Bus Ops	£30,000	TCF
Supporting Active Travel					
Cycle Parking Hubs	May-June	Sustainable City	BBLP	£50,000	LTP
Cycle Permeability	May-June	T Delivery	BBLP	£50,000	TCF
The Avenue-Bassett Avenue Cycle Lanes	May	TCF	BBLP	£250,000	TCF
Hill Lane Cycle Lanes	May	T Delivery	BBLP	£100,000	LTP
Cycle access to Southampton General Hospital – Adanac Park, Lordshill District Centre, Dale Road-Belle Moor Road & Outdoor Sports Centre	May-July	T Delivery	BBLP	£75,000	LTP
Portswood Road Cycle Lanes	May-June	TCF	BBLP	£150,000	TCF
District Centre Walkability	May-August	TCF	BBLP	£50,000	TCF
New Road-Civic Centre Road & Inner Ring Road - Bellevue/London, Bedford Place & Devonshire Rd	July	TCF	SCAPE	£400,000	TCF
Weston Shore Cycle Road	May-June	T Delivery	BBLP	£50,000	LTP
Winchester Road Cycle Lane	June	T Delivery	BBLP	£100,000	LTP
St Mary's Road Cycle Path	July-August	T Delivery	BBLP	£300,000	TCF
Bitterne Road West Bus Lane	July-August	TCF	BBLP	£150,000	LTP
St Denys' Active Travel Zone	September- December	TCF	BBLP/ SC	£900,000	TCF
Millbrook Road West Bus Lanes	Autumn	TCF	BBLP	£880,000	TCF
Electric Vehicle Charging	On Going	Sustainable	SC	£100,000	EVAP
				£4,220,000	

CONNECTING SOUTHAMPTON

GREEN TRANSPORT RECOVERY PLAN



7 Implementation Process

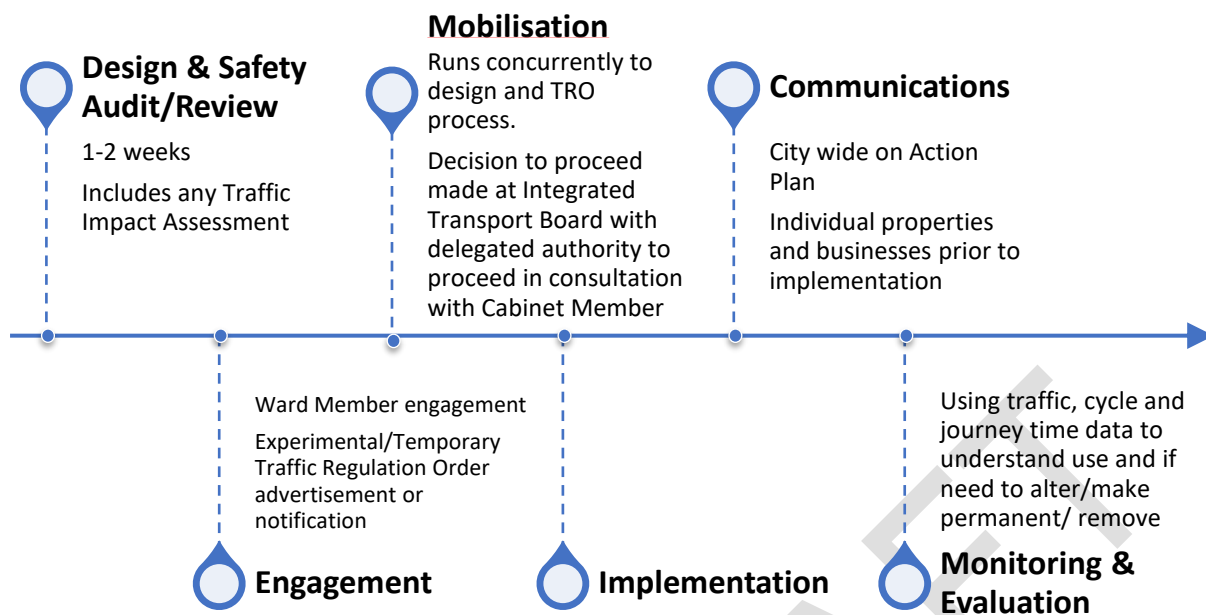
Implementation will be from May 2020 as an ongoing programme of schemes that will be delivered across Southampton.

Traffic Regulation Orders

Under statutory guidance to Local Authorities the DfT have highlighted the range of Traffic Regulation Orders (TROs) already available to them to do certain types of 'pop-up' schemes. Where a scheme requires a TRO, such as modal filters, implementing double yellow lines or mandatory cycle lanes, there are three routes available as set out by the DfT under the Traffic Management Act 2004 – permanent, experimental and temporary. A TRO is not required for new light segregated schemes or suspending parking for example.

Permanent TRO	Notice published and posted, 21-day public consultation period, formal decision on objections and then implementation
Temporary TRO	Notice of making published 7 days before order is made and notice of making published within 14 days. No consultation.
Experimental TRO	Notice of making published 7 days before implementation, 6 to 12-month consultation period while in force, formal decision on making permanent or remove within 18 months.

An indicative timeline for implementing a scheme is set out below from inception, engagement, design, experimental or temporary TRO process, and then mobilisation for implementation. This timeline will vary depending on the scheme and elements can be run concurrently if necessary. Ward Members will be kept informed of schemes in their areas and residents and businesses will be notified before implementation.



For those schemes that are identified in the medium to long term there will be public and Member engagement and consultation on the schemes. Many of these schemes have been identified as part of the Southampton City Region TCF programme and elements are being brought forward.

As part of the scheme development process assessments will be carried out on the likely impacts on other road users, primarily buses, emergency services and access to properties.

For the Managing School Run programme there is a separate application process. This process is already established through SCC's School Streets Community Order. Engagement with Headteachers of all schools in Southampton has started.

- Step 1 – Week 1 - Communication with Headteachers
- Step 2 – Week 2-3 - School expresses strong interest and residents are informed
- Step 3 – Week 3-4 – School Applies
- Step 4 - Week 5-6 – School notified
- Step 5 - Ongoing of monitoring and evaluation

Communications

Alongside the development and implementation of all the schemes there will be concurrent Communications activity. This will cover city wide communications on what the Council is doing to support active travel and social distancing. This will be supported by individual comms activities for each scheme for properties and individual coming out on direct impact on each scheme. The bus operators, police and fire service will also be engaged on specifics.

To ensure the success of a scheme is understood the Council will use its network of automatic traffic counters, temporary counters, walking counters in the City Centre, and Bluetooth journey time monitoring. This will look at how traffic reacts, changes in levels of cycling, changes in journey times, it will be analysed by an external party. The Council also has access to Sustrans #morespacetomove information. This will identify if there is a point where the scheme can be altered, made permanent or removed.

8 Supporting Programmes

Alongside the GTRP there remains a comprehensive programme of behaviour change activities through the My Journey brand that will continue to promote walking and cycling, the

commencement of the Transforming Cities programme, and a supporting strategic Solent Post Covid Communications Campaign. These are explained here.

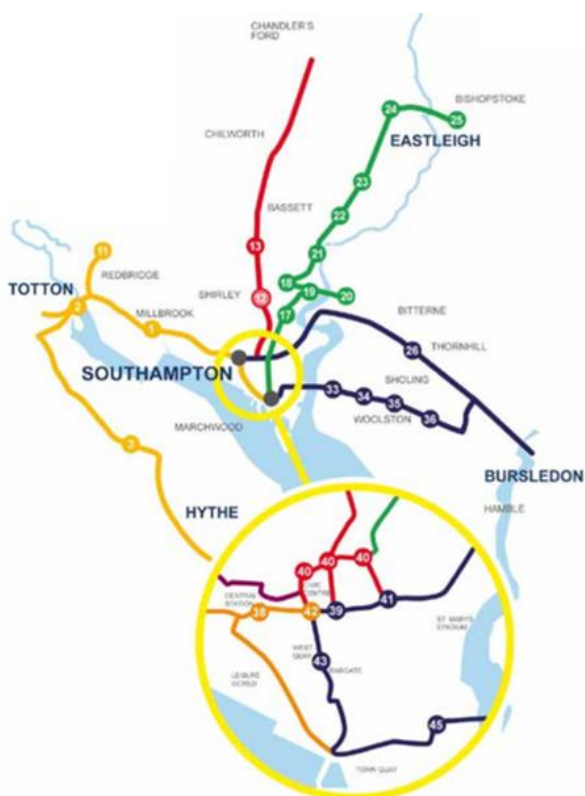
Behavioural Change

The DfT funded Access Fund programme is focused on demand management and supporting people to walk and cycle with travel planning and engagement with businesses and schools on three travel corridors from Hampshire into the City (from Totton, Chandlers Ford and Eastleigh and from Hedge End and Bursledon). This includes supporting schools in encouraging pupils to travel by bike, walk or scoot, working with businesses to develop their Travel Plans, and events and activities.

The Access Fund programme is being reviewed so activities can support the GTRP. It will include:

- Prioritising a support package for schools to enable pupils to travel safely and socially distance on the journey to and from school, initially in any phased/staggered return, then once fully back;
- Short term grant funding and information to help make bikes and cycle refresher training available for key workers, and
- Monitoring and evaluation of the impact of any measures.

Transforming Cities Fund



SCC, along with Hampshire County Council, are commencing the programming and delivery of the Southampton Transforming Cities Fund Programme. This has a strong focus on delivery of new cycling infrastructure on four main corridors between Southampton and Hampshire, supporting local cycling and walking journeys, supporting buses so they are reliable, interchange between modes, Park & Ride, supported by changes to roads in the City Centre that create more space for people.

The corridors (shown on the map) are to Totton & Waterside, to Chilworth & Chandlers Ford, Portswood, Eastleigh and Fair Oak, and Woolston & Bursledon. These are being looked at holistically and partially form the basis of some of the activities identified in the GTRP.

The GTRP provides the opportunity to implement some of the active travel schemes in a different way, and to review and refine the TCF programme so that early delivery of the cycling infrastructure can capitalise on the increases seen. HCC are also refine their TCF

programme to support their own plans and funding.

Electric Vehicle Action Plan

SCC is developing an Action Plan to increase the availability of on and off-street electric vehicle charging points. This includes expanding a network of residential charging points to give people the opportunity to charge their vehicles at home. As part of the DfT's Active Travel announcement an additional £10m was made available for on-street residential charge points. SCC is already planning how to access this funding and provide additional charge points in Southampton. This forms an integral part of this opportunity to re-define transport and travel in the city.

Solent Recovery Communications Campaign

Led through Solent Transport, the campaign will seek to encourage people in the Solent area to sustain new walking and cycling habits, as well as flexible working arrangements, that benefit both public health and the wider environment. The campaign messaging will be positioned in a positive way and will encourage people to adopt a new way of life as the country becomes accustomed to a new normal.

The campaign will be delivered under the My Journey sustainable travel brand, and looks at families, commuters, businesses, and those new to walking and cycling. The objective of the campaign is to encourage long-term travel behaviour change, following the increases in walking and cycling. Also, to help reinforce messages, we can use our Variable Message Signs located on main commuter routes to promote active travel and social distancing.

The campaigns are titled #activetravel and #newnorm and is being led by Solent Transport so a consistent message is sent across all authorities, but there will be locally led SCC comms as well. A separate detailed Solent Communications Plan has been developed and this will support the GTRP with messages around safer travel.

9 Funding

The total cost for the identified schemes and activities in the GTRP is approximately **£4.22m**.

Funding would come from existing sources set out below, including TCF, so that schemes already budgeted and committed can be brought forward. SCC recognises that we need to be agile to the changes we are experiencing and to evaluate our approach and to be considered and strategic with our interventions (both behaviour change / infrastructure). The temporary measures, may require some reallocation of existing programmes within the existing 2020/21 LTP Integrated Transport Programme that has already received budget approval as part of the Council 2020 budget. Any appropriate expenditure on activities and schemes that can be recovered from any additional Government funding for Covid-19 will be identified and this will offset any core SCC expenditure such as LTP funding. However, initially we look to utilise these existing external budgets and programmes to fast track specific projects that directly support the GTRP

Local Transport Plan (LTP)	Capital funding for transport schemes including cycling, walking, public transport, public realm, traffic signals
Developer Contributions	Contributions towards walking, cycling and public transport schemes
Electric Vehicle Action Plan	On-street charging points – grant funding opportunity from DfT being pursued
Transforming Cities Fund	Large scale programme 2020-23 for transformative schemes for active travel, public transport, interchanges and gateways on four corridors between Southampton and Hampshire
Solent Future Transport Zone	Local Mobility Hubs and e-scooter trial
Access Fund	Supporting active travel with activities and training, working with schools and businesses on Travel Planning
Travel Demand Management	Wider travel planning across the Solent in partnership with Highways England, will make use of the Solent wide communications programme
Future High Streets Fund	Bid being prepared but the GTRP is implementing some early elements for Above Bar Street, Portland Terrace and Civic Centre Road-New Road.

The Government has also indicated that they are allocating £2bn to active travel modes, some of this is already committed funding such as TCF. However, an initial £250m is being made available to local authorities for the implementation of Emergency Active Travel

schemes⁴. This is an initial funding and more may be available later in 2020 as part of the wider Cycling & Walking Investment Plan. The GTRP is set up so Southampton is well placed to utilise this additional funding effectively to achieve rapid delivery in the coming weeks. We await more information from the Government on how this funding will be allocated – as this would be of great help in combination with our existing available budgets.

If the DfT provide a proportionate grant for Emergency Active Travel measures this will offset any LTP and S106 expenditure, plus any other if higher. It is not envisaged that this will require any additional funding from outside of TCF and LTP and/or Emergency Active Travel funding.

The approximate split of funding sources in 2020/21 is:

Source	Amount
TCF	£3.07m
LTP ITB	£1.02m
EVAP	£0.1m
FTZ	£0.03m
Access Fund	Staff Time
Total	£4.22m

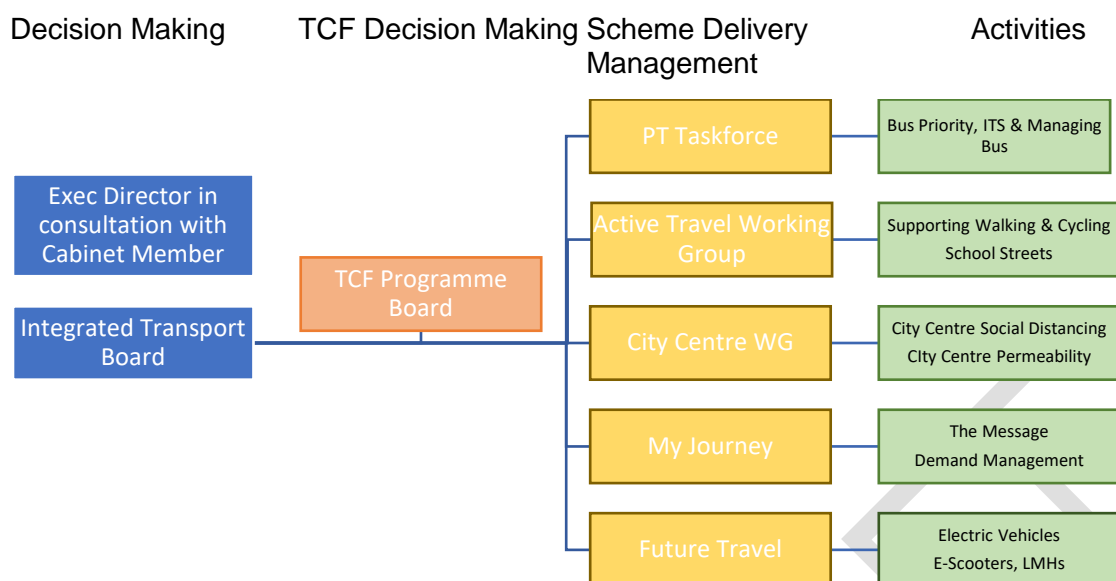
10 Governance & Resources

The implementation and oversight of the Southampton Green Transport Recovery Plan will be through the Green City & Infrastructure Team. It will be overseen by the Head of Service for Green City & Infrastructure who will report to the Director of Place and be in consultation with the Cabinet Member for Green City & Transport.

To ensure timely and quick delivery of the schemes the frequency of the Integrated Transport Board (which currently meets monthly) will be increased to weekly and held virtually. This will be the primary focus for the oversight of the project being developed and delivered as part of the GTRP. Membership will be increased to include invites to Service Manager Highway Contracts and Director of Place and Cabinet Member. Decisions will be made through the delegated powers to the Director and/or Head of Service, and in consultation with the Cabinet Member.

However, as most of the schemes are from the TCF Programme the TCF Programme Board (jointly with HCC) will also provide strategic input and approve TCF schemes. This will be also be done virtually and will input into any HCC TCF schemes that are being advanced. Alongside ITB supporting groups will all provide information and recommendations into the final scheme development and delivery, these include PT Taskforce, Active Travel Working Group, My Journey, and City Centre Working Group with Go! Southampton.

⁴ <https://www.gov.uk/government/news/2-billion-package-to-create-new-era-for-cycling-and-walking>



A Project Lead in Transport Delivery will lead on the programme with the range of activities will be delivered by teams within SCC – Transport Policy, Transport Delivery, Sustainable City & SmartCities, Highways Service Provider BBLP, and external partners such as the BID and bus operators.

The programme will be monitored and evaluated to assess whether the measures being implemented are working. This will include a comment collection database working with Sustrans through their #spacetomove campaign.

10 Roles & Responsibilities

The following sets out the roles and responsibilities of the Boards and Teams for the GTRP.

Integrated Transport Board	Decision Making via Executive Director & recommendations to Cabinet Member
TCF Programme Board	Decision making for TCF schemes
Transport Policy & Delivery Teams	Lead Teams - Client management, lead on Active Travel WG & PT Taskforce, budget management, reporting to ITB, monitoring & evaluation
Sustainable City Team	Lead on My Journey and Managing School Run programme administration & liaison with workplaces, Go! Southampton and schools
Smart Cities Team	Support on SmartCities/Solent Go for secure cycle storage and Maas.
My Journey Communications	Overall comms, collating of requests, school engagement, development and implementation of complementary campaigns #keepactive and 'the new norm' campaign. The communications campaigns will dovetail with the short-term network adaptations proposed and the additional capacity on the highway for cycling will be an enabling measure alongside the wide-reaching communications. Liaison with Solent Transport wide programme.
Go! Southampton	Primary support (representing main businesses) for City Centre Working Group and delivery of social distancing measures in City Centre
BBLP	Civil design work, eTRO administration, temporary barrier procurement, construction, safety audit/safety review

11 Programme

Emerging	
May	<p>Adoption of GTRP via Exec Director and Cabinet Member Prioritisation finalised, scheme list approved, BBLP briefs, TROs advertised, increased remote communications with key stakeholders, communications planning and engagement planning, identification of priority parklets.</p> <p>Schemes:</p> <ul style="list-style-type: none"> - Adjusting signalised crossing timings, - First 'pop-up' cycle lanes installed – Weston Shore, Bassett Avenue-The Avenue and Hill Lane - Cycle routes to Southampton General Hospital - City Centre temporary cycle parking - Bus Stop Social Distancing commences - Retail Social Distancing in City Centre
Restart	
June	<p>Initiation of #keepactive and '#newnorm' campaigns through comms channels.</p> <p>Schemes</p> <ul style="list-style-type: none"> - First temporary School Streets in line with any phased return to school including engagement support, - Roll out of other pop up cycle lanes – Portswood Road Winchester Road, - City Centre Parklets & Cycle Parking - Retail Social Distancing – District Centres - Parklets programme
June-Aug	<p>Further permanent cycle schemes rolled out –St Mary's Road, Bitterne Road West, New Road-Civic Centre Road, Modal Filters, continued monitoring – decision on Bassett Avenue (Northern section)</p>
Recovery	
Sept-Nov	<p>Larger scale schemes implemented through TCF, monitoring, continuation of '#newnorm' campaign, St Denys' ATZ, Millbrook Road West Bus Lane,</p>
Jan 2021	<p>Decisions on making any temporary schemes permanent</p>

Appendix 1 - Assessment of Infrastructure Options for Corridors and Destinations

	Corridor/ Area	Project	Priority Area	Risk	Budget	Spare Capacity	Deliverability	Cost	Timeframe Near/ Medium/ Long	Proceed
Supporting Active Travel	City Centre Car Parks	Cycle Parking Hubs for workers	City Centre	Med	LTP	Repurposing existing car parking spaces in SCC car parks (1 space = 10 cycle spaces) – up to 10 car parking spaces. Car park use lower but as more workers return demand could increase.	Assessment of car parks, procurement of fencing, gates and temporary Sheffield stands, with development of secure access via SolentGo/ Smartcities card/ MaaS	£10k per car park – 5 car parks = £50k Offset car park revenue loss to be assesse d	Near	Y
Supporting Active Travel	District Centre Car Parks & Roads	Additional cycle parking for workers	All District Centres	Med	LTP	Repurposing existing car parking spaces in District Centre car parks or removing/ suspending on- street parking bays	Assessment of car parks, procurement of fencing, gates and temporary Sheffield stands, with development of secure access via SolentGo/ Smartcities card/ MaaS	£5k per site – 5 DC car parks & on-street - £25k	Near- Medium	Y

Supporting Active Travel	Pedestrian crossings	Pedestrian & cycle priority calls by additional detection and retiming of demand	Key Commuting Corridors, City Centre, District Centres	Low	LTP	ITS indicate that some signals have capacity to do this	BBLP ITS to redo timings on identified signals to be responsive to	£10k	Near	Y
Supporting Social Distancing	Bus Stops	Organising space around bus stops and considering other social distancing measures, temporary kerbs	City Centre, District Centres, Other Busy Bus stops (e.g SGH, University)	Low	LTP	Where there is insufficient space may need to use carriageway	Implications of not having level boarding, need to understand levels of use, using chalk paint or equivalent to demarcate	£50k	Near	Y
Supporting Active Travel	Buses	Additional card readers on buses (tap on-tap off)	All	Low	TCF Fast track	Additional reader installed on bus	Procurement via the CBTF	£30k	Near-Medium	Y
Supporting Social Distancing	Parklets	Providing additional space for benches, green space, cycle parking to widen footways – opportunity for public art	City Centre, District Centres		LTP/FTZ	Using spare roadspace for small cycle parking, green spaces etc to provide additional footway space	Procurement via BBLP and short turnaround to install	£5k/parklet – 15 sites = £75k	Near	Y

Supporting Active Travel	A33 Millbrook Road West	Bus Lanes inbound from Millbrook Rndbt to Paynes Road	Key Commuting Corridors	Low	TCF Fast track	3 lanes that could have one converted to bus lane while traffic levels are low to establish bus priority	Experimental eTRO, signs & lines	£980k	Long	Y
Supporting Social Distancing	All	School Street Closures - staggered start/end times	Schools	Low	Access Fund/ LTP	Use road space outside schools for start/end day closures to for social distancing	Supply of materials – cones, barriers etc, assessment of willing schools and available roadspace. Closures driven by schools utilising Community Street Closure order. Comms & engagement required	Approx £15k/school – 30 schools = £450k	Near-Medium	Y

FINAL

Supporting Active Travel	Access to Southampton General Hospital	Cycle routes (e.g. lanes) and priority (e.g. modal filters) on Dale Road, through Lordshill from Adanac Park, Bellemoor Road, Hollybrook Cemetery. Support school street closures e.g. Upper Shirley High/ Shirley Infants.	Key Employment Area	Med	LTP	Removing 6 spaces on Dale Road, off-road routes through Lordshill via District Centre, modal filters restricting vehicle access at Bellemoor.	eTRO for Dale Road & Bellemoor, signs & lines, temporary modal filter. Restricting vehicle movements some residential distributor roads e.g. Bellemoor Road.	£75k	Near	Y
Supporting Active Travel	Hill Lane	Cycle lanes on Hill Lane from Burgess Road to Archers Road (connecting to existing)	Key Commuting Corridor, Access to Leisure	Low	LTP	Mandatory cycle lanes in both directions	eTRO, signs and lines	£100k	Near	Y
Supporting Active Travel	Shirley High Street	Removing on-street parking and converting footways to shared use	Key Commuting Corridor, District Centre	High	LTP	None on carriageway and in places footway narrow	eTRO, but a busy bus corridor affecting public transport	£250k	Long	N

Supporting Active Travel	Bassett Avenue	Remove one lane in each direction to make temporary segregated cycle lanes from Chilworth to Bassett Avenue	Key Commuting Corridor	Med	TCF Fastrack	Current traffic levels are low so one lane could be taken. Winchester Rd-Bassett Ave planned for reallocation	eTRO, signs/temporary barriers, connectivity at either end	£150k	Near	Y
Supporting Active Travel	The Avenue	Mandatory/segregated cycle lane between Winn Rd and Burgess Road	Key Commuting Corridor	Low / Med	TCF Fastrack	Wide 2 lanes that can accommodate cycle & traffic lanes	BBLP done TCF design, eTRO, signs, lines or temporary barriers in advance of permanent scheme (Oct)	£100k	Near	Y
Supporting Active Travel	Portswood Road	Mandatory cycle lane between Portswood Broadway and Lodge Road	Key Commuting Corridor, District Centre	Low / Med	TCF Fastrack	Space in carriageway with some parking reallocate to side streets	BBLP done TCF design, eTRO, signs, lines, parking bay removal	£150k	Near	Y
Supporting Active Travel	St Mary's Road	Create segregated 2-way route between Onslow Road and Charlotte PI	Key Commuting Corridor	Low	TCF Fastrack	Wide carriageway that could be reallocated	BBLP done TCF design for widened footway for seg route, eTRO, signs, lines	£300k	Medium	Y

Supporting Active Travel	Bitterne Road West Cycle Lane	Option 1 Mandatory cycle lane on Bitterne Rd W from Bitterne Village (Lances Hill) to Northam River Bridge	Key Commuting Corridor	High	LTP	Dual carriageway would reduce capacity while flows are low, space once lane is taken away for cycle – be a wide single. As traffic flows increase would need to be removed	eTRO, signs, lines/temporary barrier required – speeds and safety, acceptability	£500k?	Long	N
Supporting Active Travel	Bitterne Road West Bus Lane	Bus lanes with cycles & taxis permitted, in each direction from Bitterne to Northam Road, cycle lane across Bitterne Bridge	Key Commuting Corridor	Med	LTP	Dual carriageway, flows are low to take away one lane in each direction for bus lane to help buses	eTRO, signs, lines, acceptability, using EVMS and a comms plan for engagement	£150k	Medium	Y
Supporting Active Travel	Bitterne Road East	On road mandatory cycle lane from Upper Deacon Road to Maybray King Way	Key Commuting Corridor	Low / Med	LTP	Design for SCN2 has with direction cycle lanes on wide single carriageway road	Would require removal of right turn pockets and left turn filter at Bath Road, eTRO, signs, lines/ temporary barrier	£250k	Long	N

Supporting Active Travel	Portsmouth Road	On road cycle lane from Itchen Bridge to Botley Road	Key Commuting Corridor	High	TCF Fastrack	Space is limited between Itchen Bridge and Weston Lane, more space from this point to city boundary	eTRO, signs, lines/ temporary barrier	£250k	Long	N
Supporting Active Travel	St Denys ATZ	Identified items from St Denys' ATZ engagement	Residential Area	Med	TCF Fastrack	Targeted road closures, priority changes, cycle parking		£900k	Long	Y
Supporting Active Travel	Winchester Road (Bassett Ave -Hill Lane)	Make cycle lanes mandatory and reallocate parking	Key Commuting Corridor	Med	LTP	Cycle lanes already in situ but parked on	Limited alternative places to park	£100k	Medium	Y
Supporting Active Travel	New Road-Civic Centre Road	Closure of New Road-Civic Centre Road to all traffic except buses, taxis & cycles	City Centre	Med	TCF Fastrack	Excess road space that can be reallocated, closure to through traffic would reduce volumes	Assessment of what to do with access traffic and messaging, eTRO, signs, temporary barriers, enforcement	£300k	Medium	Y

FIND

Supporting Active Travel	Above Bar Street	Make Above Bar Street (south) one-way for buses, taxis & cycles only from New Road to Pound Tree Road. Cycle contraflow. Remove bus stops outside Bella Italia-Yates to allow footway widening	City Centre	Med	TCF, FHSF	Excess road space that can be reallocated either through temporary barriers to widen the footway, would require one lane for traffic and space for bus stops s/b close to precinct	Consultation with bus operators on potential routing changes for buses going in opposite direction to the one-way. Relocation of taxi rank. Removal/repositioning of bus stops towards precinct, eTRO, temporary widening to become permanent	£100-300k	Medium-Long	N
Supporting Active Travel	City Centre Pedestrianisation	Expanding the pedestrian and cycle core of the City Centre – Guildhall Square, East Street, High Street & Bargate, remainder 20mph limit	City Centre	High	TCF, FHSF	Closing road to be reallocated to all traffic except cycles and people walking.	Consultation with bus and taxi operators, BID and businesses regarding loading and deliveries, disabled abys, upgrades to surfacing	£1m	Long	Y – Future Phase

Supporting Active Travel	Queensway-Palmerston Road	Reallocation of road space to on road cycle lanes	City Centre	Low	LTP	Enough width that can be reallocated on western side of Palmerston Road without impacting on P&D bays	eTRO, signs, lines/ temporary barrier	£50k	Medium	N
Supporting Active Travel	Weston Shore	Closure of Weston Parade to traffic for temporary cycle route	Woolston, City Centre	Low	LTP	Reallocate road space	Re-routing of traffic assessment, eTRO, signs, temporary barriers, enforcement, acceptability	£40k	Near	Y
Supporting Active Travel	Cycling Permeability	Removal of right turn bans for cycles, contra flow cycling on one-way streets	City Centre, District Centres, ATZs	Low	LTP	Reallocating priority at signals	eTRO, signs	£50k	Medium	Y
Supporting Active Travel	Inner Ring Road	Modal filters/closures at Devonshire Road/ Cumberland Place and London Road/ Bellvue Road	City Centre	Low	TCF Fastrack	Creates additional roadspace for pedestrian crossing and safety	eTRO, signs, bagging of lights at Devonshire, temporary modal filters on Bedford Place	£100k	Medium	Y

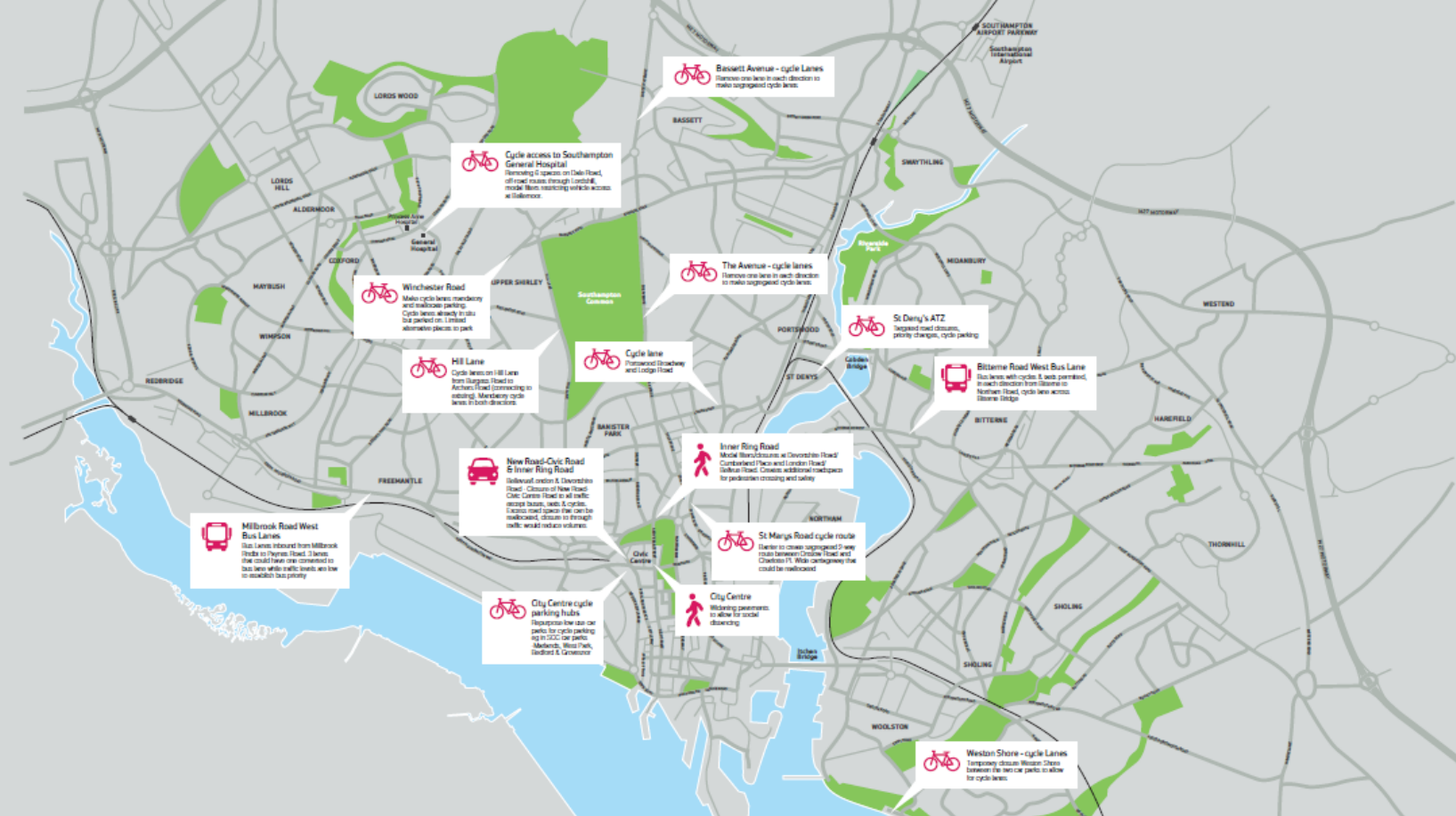
Supporting Social Distancing	Lordshill District Centre	Additional queuing space for shops and additional parklets	District Centre	Med	LTP	Creates additional space outside Sainsbury's, need to suspend some parking bays.	Off-Street Parking TRO, barriers, stencil markings	£20k	Near-Medium	
Supporting Social Distancing	Shirley District Centre	Additional space for people walking around Shirley High Street - Widening bus stops at Precinct, relocate parking bays, pedestrian crossing timing changes, parklets, temporary footway widening	District Centre	Med	LTP	Use bus laybys on Shirley High Street, parking bays would need to be suspended to widen footways	eTRO, community & business consultation, temporary barriers for footway widening	£100k	Medium	Y – bus stops Phase 1, rest Phase 2
Supporting Social Distancing	Portswold District Centre	Widening bus stops in Broadway, pedestrian crossing timing changes, parklets, temporary footway widening, bus & cycle only road	District Centre	Med	LTP	Parking and disabled bays would need to be suspended or relocated to widen footways	eTRO, community & business consultation, temporary barriers for footway widening, longer term elements linked to TCF	£100k	Medium	Y – bus stops Phase 1, rest Phase 2

Supporting Social Distancing	Bitterne District Centre	Managing space around shops, cycle routes to Bitterne, additional space at bus stops	District Centre	Med	LTP	Precinct is pedestrianised, narrow space around West End Road bus stops on footway	eTRO, community & business consultation, temporary barriers or planters for shop queuing	£50k	Medium	Y – Phase 2
Supporting Social Distancing	Woolston District Centre	Pedestrian crossing timing changes, Local Mobility Hub and Active Travel Zone	District Centre	Low	LTP	Lesser scope to carry out widening works	Woolston ATZ TCF scheme due to start engagement in October	£25k	Long	N
Supporting Future Travel	Electric Vehicle Action Plan	On-street charging points in residential areas	Residential Area	Med	EVAP	Uses on-street charge point bollards	eTRO, signs, preferred supplier	£100k	Medium-Long	Y

FINAL

CONNECTING SOUTHAMPTON

GREEN TRANSPORT RECOVERY PLAN



Appendix 2 - Visual examples of highway measures

Supporting Social Distancing

Street stencils + chalk for marking out social distancing as opposed to tape (can be pressure washed off):



Example of temporary build out for bus stop at Brixton - Rediweld kerb with new asphalt pad. Potential for Bassett Avenue, The Avenue, City Centre bus stops



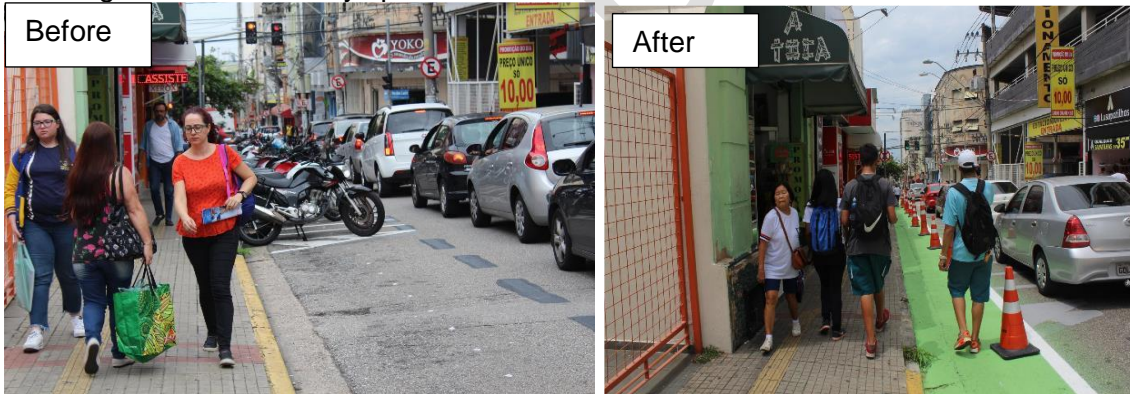
Example of Temporary Cycle Build out at a bus stop in Paris



Temporary Cycle Parking Parklets, Netherlands



Creating additional footway space



Widening of pavements in Centro, Sorocaba

Link here for more examples https://www.itdp.org/wp-content/uploads/2020/02/DHoppe_TacticalUrb_11032020-1.pdf



Secure Cycle Parking in London



Supporting Active Travel

Leicester - Taking out a lane and creating a cycling



Temporary modal filter planter boxes used in Tower Hamlets, London:



Blocking a right turn at a junction:



Two lanes of Old Shoreham Road (A Road) in Hove in both directions have been turned into cycle lanes:





Further example of painted cycle lane:



Example from City of Jersey of paint to expand pavement widths



FINAL DRAFT